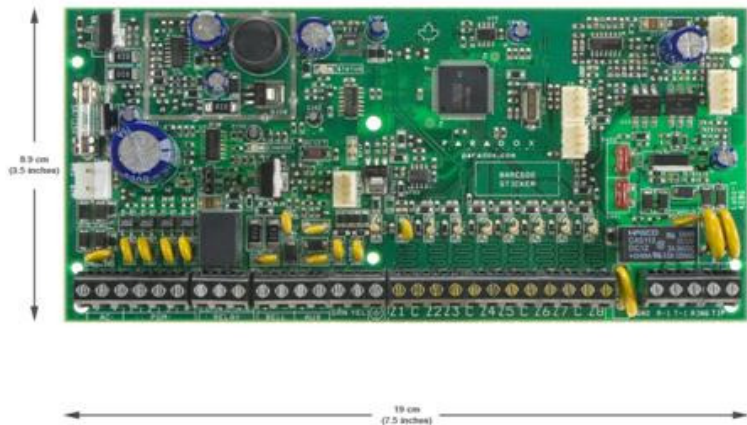




SP6000 Complete Pet Immune kit

SP6000 PC Board Features

- Supports StayD mode
- 4-wire expansion bus
- Expandable to 32 zones
- Expandable to 16 PGMs
- 2 Partitions
- 32 User Codes
- Supports PSC100 GSM Module
- Supports IP100 Internet Module
- Supports VDMP3 Plug-in voice dialer
- Supports REM3 hand-held remote keypad (require RTX3 V1.31 or higher)
- In-field firmware upgradeable via a 307USB and WinLoad
- Menu-driven programming for the Installer, Master and Maintenance codes
- Multiple phone numbers: 3 for monitoring station, 5 for personal dialing and 1 for pager reporting
- Patented 2 opto coupler dialer circuit - the most reliable dialer in the industry (US Patents 5751803, RE39406)
- Automatic Daylight Savings Time feature
- Push button software reset (reset to default values and restart)
- Direct connect at 9.6k baud with WinLoad
- 256 events buffered



- Fits in 20cm x 25.5cm x 7.6cm (8in x 10in x 3in) and 28cm x 28cm x 7.6cm (11in x 11in x 3in) metal boxes

SP-ZX8 8 Zone Expander Features

- Spectra SP series, MG5000, MG5050
- Add 8 zones
- 1 PGM output
- Use zone input as an anti-tamper switch input



Metal Box Features

- Provision for multiple module and panel mounting
- Many punch-out holes for simple wiring
- Easy door removal
- Convenient sizes:
 - 20cm X 25.5cm X 7.6cm (8" x 10" x 3")
 - 28cm X 28cm X 7.6cm (11" x 11" x 3")
 - 33cm X 40.5cm X 10cm (13" x 16" x 4")



K32 32-Zone Hardwired LED Keypad Module Features

- Compatible with MG5000, MG5050 and Spectra SP series
- Supports StayD Mode
- 32-zone LED display
- Separate Arm, Sleep, Stay and Off LEDs per partition
- In-field firmware upgrade via 307USB and WinLoad
- 1 keypad zone input
- Independently set chime zones
- 7 one-touch action buttons
- 3 keypad-activated panic alarms
- Adjustable backlight
- Connects to 4-wire communication bus



9Amp Battery Features

- Nominal Voltage: 12V
- 9.0 capacity @ 20hr rate
- 1.7A max charge
- Length - 151
- Width - 65mm
- Height - 93mm
- Total height - 99mm
- Weight (Kg) 2.44



Siren Features

- Combination 15W horn speaker with built-in siren driver
- Economical
- 6-12VDC operation
- Typical current drain 600mA at 12VDC
- 108dB at 1m
- Weather resistant ABS plastic design



DG75 Digiguard Pet Immune Motion Detector Features

- Extremely reliable and false-alarm free
- Dual optics (2 dual opposed element sensors)
- Provides superior pet immunity using a patented combination of advanced optics and digital processing technologies
- Immune to pets weighing up to 40kg (90lbs)
- Digital Dual Opposed Detection
- 11m (35ft) X 11m (35ft); 90° viewing angle



Standard Magnetic Contact

- Rated at 40V 0.2A
- Concealed terminals with easy mounting
- Gap width 22mm take and 26mm break
- Now with additional protection of reed switch



Glue Tubes 50ml

- 10 Per Box



Transformer 50VA 16VAC Lightning Protection

- Stand alone transformer in housing,
- Mounting holes for transformer,
- External Power connector block
- 12/16VAC -50VA Protected



Panic Button Features

- N/O and N/C contacts



- Suitable for gluing onto walls
- Rating: 0.5A at 12V DC
- Available in standard and luminous
- Guaranteed Securi-Prod quality

6 Core Solid Comms Cable

- 6 core White / 100m

Includes.....

- 1 x SP6000 PCB
- 2 x SP-ZX8 Expander
- 1 x Metal Box (28 x28 x 7.6 cm)
- 1 x K32 32-Zone Hardwired LED Keypad
- 1 x 9 Amp Battery
- 1 x 15 Watt Siren
- 4 x DG75 PET Immune Detectors
- 2 x Door Contacts
- 10 x Tubes Glue
- 1 x 50 VAC Transformer
- 2 x Panic Button
- 1 x 6 Core Solid Comms Cable

